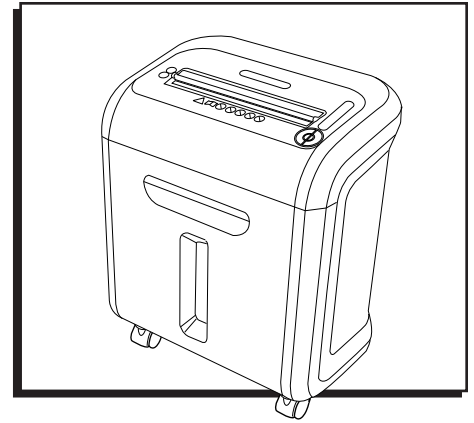


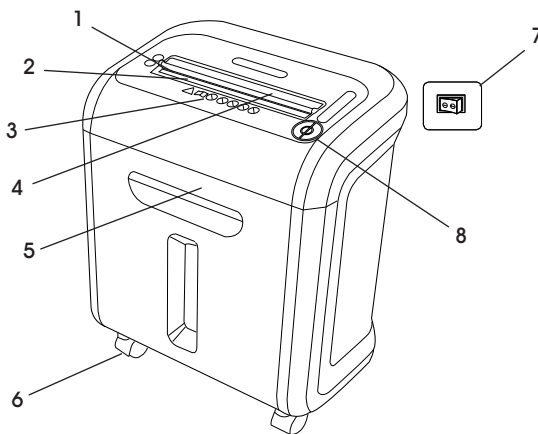
ULINE H-2606
FELLOWES® PS-79Ci
PAPER SHREDDER

1-800-295-5510
 uline.com



 **NOTE: Read these instructions before use.**
 Do not discard. Keep for future reference.

PARTS



REF.	DESCRIPTION
1	SafeSense® Technology
2	Paper entry
3	See safety instructions
4	CD/Card safety flap
5	Pullout bin
6	Casters
7	Disconnect power switch
8	Control Panel and LEDs

CAPABILITIES

Will shred paper, plastic credit cards, CD/DVDs, staples and small paper clips.

Will not shred adhesive labels, continuous form paper, transparencies, newspaper, cardboard, large paper clips, laminates, file folders, X-rays or plastic other than noted above.

Paper Shred Size

Cross-Cut – 5/32 x 1½"

Maximum

- Sheets per pass – 16*
- CDs/Cards per pass – 1*
- Paper entry width – 9"

*8½ x 11", 20 lb. paper at 120V, 60 Hz, 4 amps; heavier paper, humidity or other than rated voltage may reduce capacity.

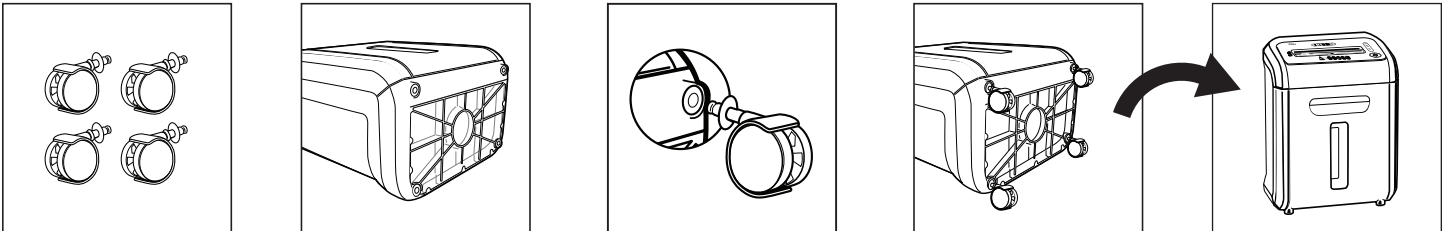
Maximum recommended daily usage rates: 500 sheets, 25 credit cards, 10 CDs, 16 sheets per pass.

 **NOTE: Fellowes SafeSense® shredders are designed to operate in home and office environments ranging between 50-80°F and at 40-80% relative humidity.**

SAFETY

- Operation, maintenance and service requirements are covered in these instructions. Read completely before operating shredder.
- Keep away from children and pets. Keep hands away from paper entry. Always set to OFF (O) or unplug when not in use.
- Keep foreign objects – gloves, jewelry, clothing, hair, etc. – away from shredder openings. If object enters top opening, switch to Reverse (◀◀) to back out object.
- Do not use aerosol products, petroleum-based or aerosol lubricants on or near shredder. Do not use canned air or air dusters on shredder. Vapors from propellants and petroleum-based lubricants may combust, causing serious injury.
- Do not use if damaged or defective. Do not disassemble shredder. Do not place near or over heat source or water.
- This shredder has a disconnect power switch that must be in the ON (I) position to operate the shredder. In case of emergency, move switch to OFF (O) position. This action will stop shredder immediately.
- Avoid touching exposed cutting blades under shredder head.
- Shredder must be plugged into a properly grounded wall outlet of the voltage and amperage designated on the label. The grounded outlet or socket must be installed near the equipment and easily accessible. Energy converters, transformers or extension cords should not be used with this product.
- Fire hazard – do not shred greeting cards with sound chips or batteries.
- For indoor use only.
- Unplug shredder before cleaning or servicing.

CASTER INSTALLATION

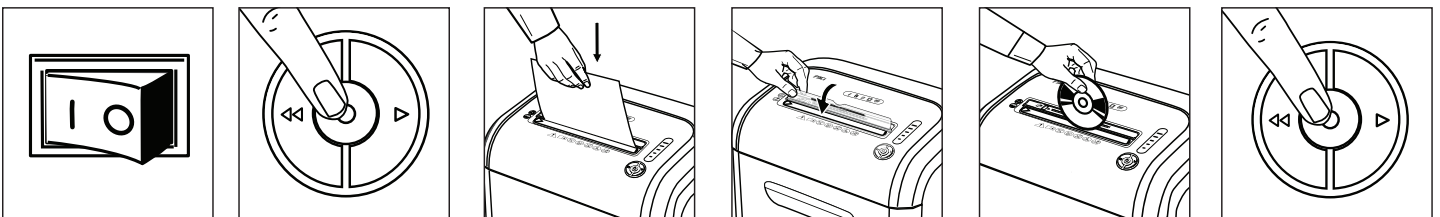


1. Locate casters.
2. Lay shredder on its back.
3. Insert casters into housing.
4. Flip upright.

OPERATING INSTRUCTIONS

Continuous operation up to 20-minute maximum.

 **NOTE:** Shredder runs briefly after each pass to clear entry. Continuous operation beyond 20 minutes will trigger 30-minute cool down period.

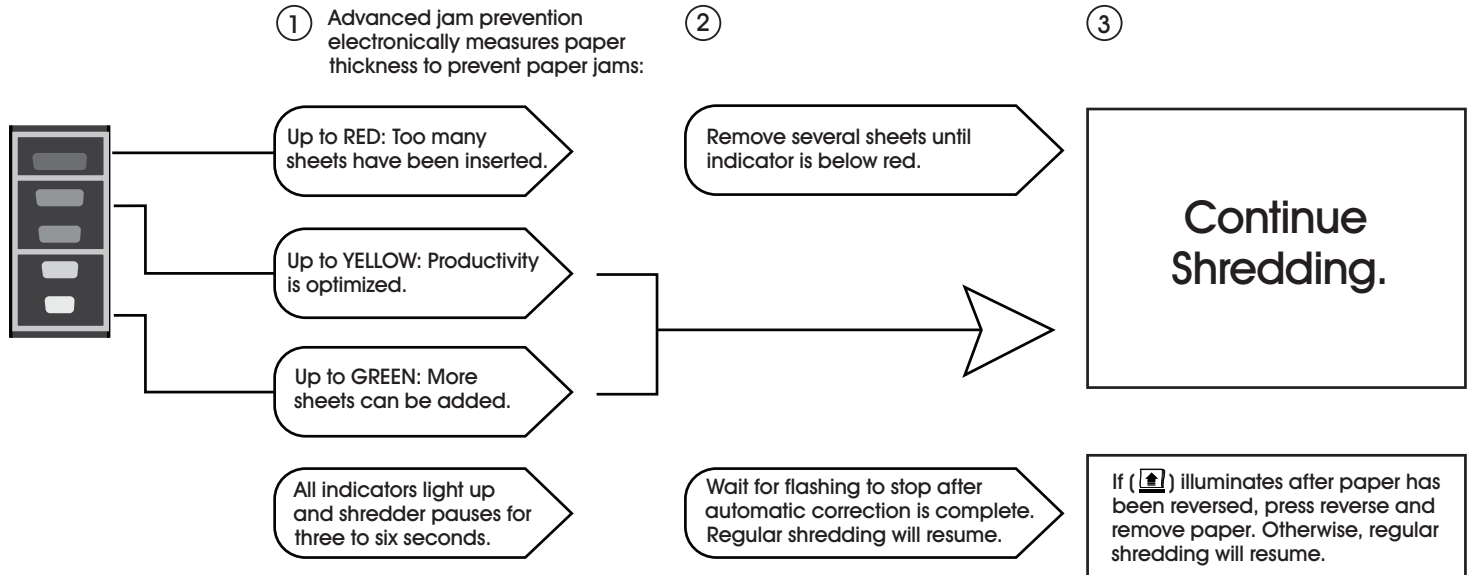


1. Plug in and put disconnect power switch in ON (I) position.
2. Press ON (⏻) to activate (blue).
3. Feed paper straight into paper entry and release.
4. To shred CDs or credit cards, rotate safety flap into place.
5. Hold card/CD at edge. Feed into center of entry and release.
6. When finished shredding, set to OFF (⏻) position.

PRODUCT FEATURES

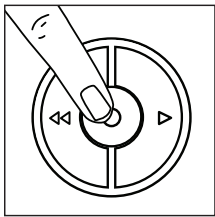
JAM-PROOF SYSTEM

Jam-proof system eliminates paper jams and powers through tough jobs.

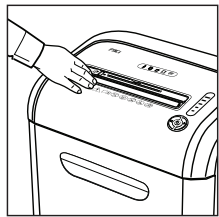


SAFESENSE® TECHNOLOGY

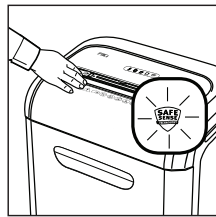
SafeSense® technology stops shredding immediately when hands touch the paper opening.



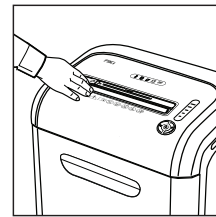
1. Turn the shredder ON (⏻) to activate SafeSense®.



2. Touch test area and look for the SafeSense® indicator to illuminate.



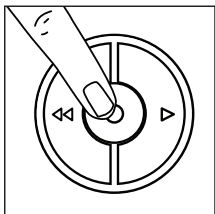
3. SafeSense® is active and working properly.



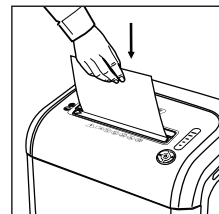
4. If hand is held on SafeSense® area more than 3 seconds, shredder will shut off.

ENERGY SAVING SYSTEM

Energy saving system creates optimal energy efficiency.



1. To get out of sleep mode, touch control panel.



2. Insert paper.



NOTE: Sleep mode shuts down after 2 minutes of inactivity.

MAINTENANCE

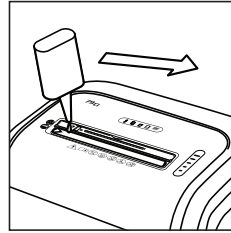
OILING SHREDDER

All cross-cut shredders require oil for peak performance. If not oiled, a machine may experience diminished sheet capacity, intrusive noise when shredding and could ultimately stop running. To avoid these problems, we recommend oiling shredder each time user empties waste bin.

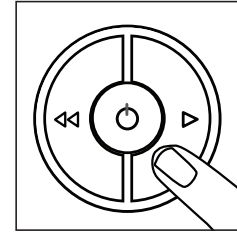


CAUTION! Use only a non-aerosol vegetable oil in long nozzle container, such as S-16094.

Follow oiling procedures below and repeat twice.



1. Apply oil across entry.



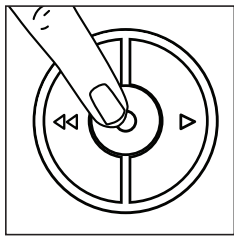
2. Press and hold forward (▶) for 2-3 seconds.

CLEANING AUTO-START INFRARED SENSORS

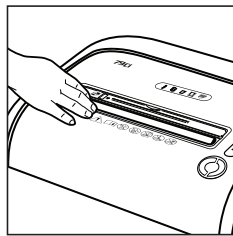
Paper detection sensors are for maintenance-free operation. However, on rare occasions the sensors may become blocked by paper dust, causing the motor to run even when there is no paper present.



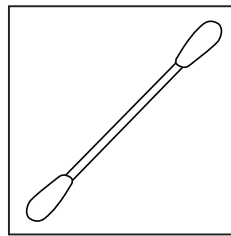
NOTE: Two paper detection sensors are located in the center of the paper entry.



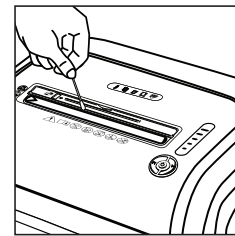
1. Turn off and unplug shredder.



2. Locate auto-start infrared sensor.



3. Dip cotton swab in rubbing alcohol.




4. Using cotton swab, wipe away any contamination from the paper sensors.

TROUBLESHOOTING

OPERATING ISSUE	RECOMMENDATIONS
Overheat Indicator	When the Overheat Indicator is illuminated: 1. Allow the shredder to cool down. 2. Resume shredding once the Overheat Indicator is no longer illuminated.
Bin Open	When Bin Open is illuminated: 1. Close the bin. 2. Resume shredding.
Bin Full	When Bin Full is illuminated: 1. Empty the bin. 2. Resume shredding.

TROUBLESHOOTING CONTINUED

OPERATING ISSUE	RECOMMENDATIONS
Remove Paper	When Remove Paper is illuminated: 1. Press the 'reverse' button (◀◀) and remove the paper. 2. Reduce paper quantity to an acceptable amount and refeed into paper entry.
SafeSense® Indicator	When SafeSense® Indicator is illuminated: 1. Remove hands from proximity of the paper entry.  NOTE: If illuminated for more than three seconds, the shredder will automatically turn off. In this case, press the power button on the control panel to resume shredding.